

THE BOYUM PACK

The Boyum Pack has arrived -> Simplicity at Work...

From the company that brought you the SAP Certified B1 Usability Package comes the Boyum Pack; a package of stable, powerful modules that work independently to bring flexibility, usability and productivity to SAP Business One customers and partners alike.

Usability

- Quick and Easy customization
- Enhancement Modules
- On-Site Development

Productivity

- B1 Print and Delivery
- B1 Budget
- B1 Time Task
- B1 Document Handling

and more to come

Partner Logic

Your Logic - Our Quality

With the Boyum Pack SAP Business One Consultants and Sales People now have a single add-on with almost limitless capabilities. Imagine an add-on that combines Boyum's world class functionality and stability, but that enables you, the partner, to introduce your own functionality and create a single, universal add-on that will fulfill the needs of your entire customer base. No more searching for and implementing multiple (and often incompatible) add-ons for your projects. The Boyum Pack is the panacea for SAP Business One partners.

The Boyum Pack utilizes Crystal Reports across all documents, providing you with unprecedented control and visibility; the ability to tailor documents and reporting to the specific requirements of each and every customer.

The Boyum Pack is an extension of the B1UP. Therefore, to benefit from the new modules you must first have the B1UP in place. Modules can be purchased as required and, like the B1UP, are chargeable based on the number of users.

Hence "Simplicity at work" -> Boyum IT makes partnering made easy...

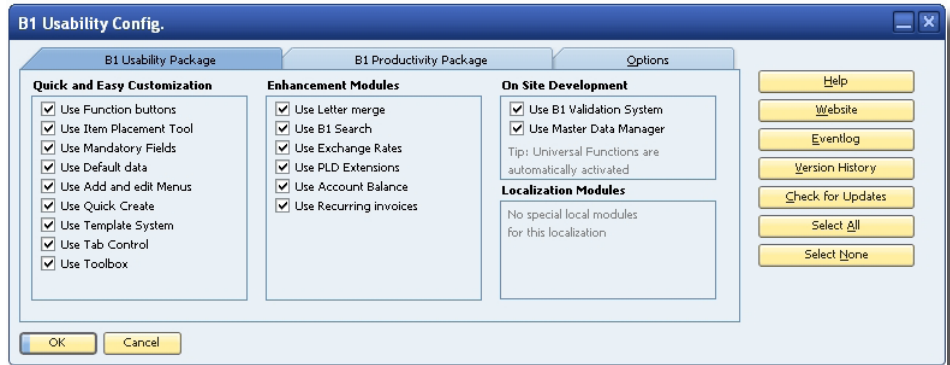


USABILITY



B1 USABILITY PACKAGE (B1UP)

The foundation for the new modules is the superb B1UP - extremely popular and familiar to most SAP Business One partners. Updates and new features relating to SAP Business One usability will still be regularly released for B1UP licensees.



Quick and Easy Customization

(Make SAP Business One suit your customer)

Function buttons (available through right click)

Applies buttons on every window, which enables you to make shortcuts, automate business processes and easy the navigation through SAP Business One.

Mandatory fields (available through right click)

Make every field in SAP Business One mandatory, enhancing the data quality and ensuring no data is forgotten.

Item Placement Tool (available through right click)

Screen designer functionality where you can redesign every form in SAP Business One. Relocate and hide fields & tabs, enabling that SAP Business One can be customized to suit the individual customers business and processes.

Add & Edit Menus

Create your own menus or rename the existing ones. Make the menu suit your customer.

Tab Control

Define a new tab order in your SAP Business One. Making the entering of data in SAP Business One faster.

Default Data

Set additional default data for business partner and Items, hereby enhancing the user friendliness of SAP Business One.

Toolbox

A range of functionalities which enhances the general usability in SAP Business One. E.g. <Enter> in a document will send the cursor to last empty row and not add the document.

Template system

Create snapshots of current data for any window and store them as templates for easy creation of master data and execution of reports. Often used to create and manage different customer and item groups.

Quick Create

Enables you to create a new item or business partner on the fly in a simple form, making the user able to focus on the business here and now and not on SAP Business One.

Enhancement Modules

(Enhance the use of SAP Business One)

B1 Search

Search functionality which allows you to search up to 14 different forms and on row levels on documents, enabling the customer to find the relevant information fast and efficiently.

Recurring invoices

Enables the SAP Business One to handle invoices which need to be send recurrently. E.g. rent, maintenance, subscriptions. Giving a solid overview of expected income and already invoiced amounts.

PLD Extension

Import and Export reports layouts to XML.

Letter Merge

Merge data from Business Partner Master Data with you own Microsoft Word (2003&2007) templates. Single or mass letter merge. CRM is enhanced through the possibility to add activities connected to the merge.

Exchange rates

Online update of exchange rates via the ECB (European Central Bank).

Account Balance

Create account balance reports for customers/suppliers in PDF.

On Site development

(Made for consultants)

B1 Validation system

Defines triggers, can control different conditions and launch universal functions. The systems allows consultant to perform minor developing tasks directly on site.

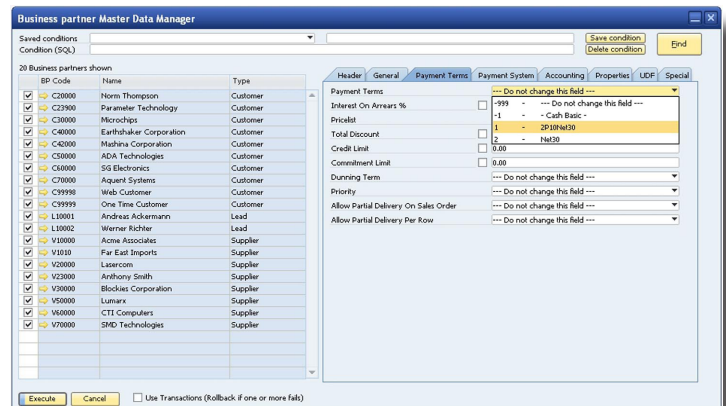
Universal Functions

A range of functions which can enhance the use of Business One. Common is that these functions needs a trigger, either B1 Validation system or universal functions.



Master Data Manager

With the master data manager you are able to perform administration and maintenance tasks on common master data in the current database as a batch. This is done without the need for external tools like Data Transfer Workbench.



Business partners are only one of many data-types you can control. You can in a similar fashion control Item master data, Form-settings and Authorizations.

PRODUCTIVITY

B1 PRODUCTIVITY PACKAGE (B1PP)



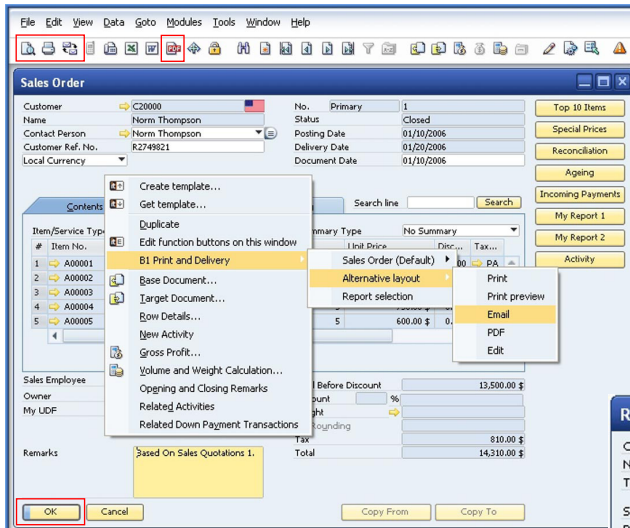
The B1 Productivity Pack will initially feature the following modules, with numerous further modules to be added subsequently:

B1 Print & Delivery (available now)

Crystal Report is the worlds most used reporting system and now it is available to all SAP Business One users. SAP has acquired Business Objects who are behind Crystal Report, which means that SAP has gained the userfriendly interface to Business Intelligence which was needed.

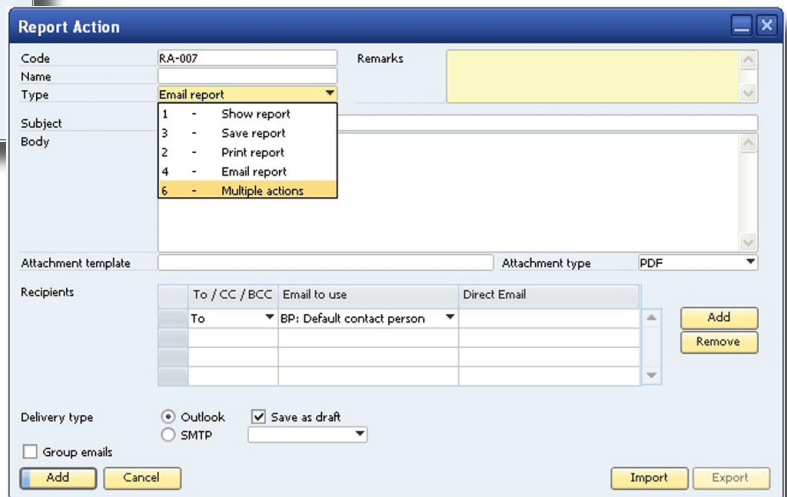
B1 Print & Delivery is advanced Crystal Report integration enabling users to email Marketing Documents and Account statements from SAP Business One via Outlook, saving them eons of time and briefcases of money.

By activating one Crystal Report, users can manage all Marketing Documents making the B1 Print & Delivery the ideal tool to customize your customer's system in a quick, easy and profitable way.



B1 Print & Delivery can take over the entire document handling process for sales and purchase documents. You have the option to control each of the delivery methods (Print, show, Email, PDF and add document). You can also work with multiple layouts of different businesspartners or on the fly choose a different layout.

Print during "add"



Each single action you can do with a report can be customized in details with the powerful report action configuration. You can set up individual actions or group them together in a multi-action (Example: print and email with one click). And in the future even more actions will be included.

B1 Budget (available later this year)

In SAP Business One you can make budgets on accounts. With B1 Budget you can now also make budgets on Customers and Items and run Budget reports detailing Management and Sales. This means that users can easily see which part of the business are on budget and which parts are not. Customer budgets and Items budgets can be made on Customer/Item group level and/or directly at Customer/Item level.

B1 Time Task (available later this year)

B1 Time is, quite simply, a Time Registering module. Users can create "tasks" and assign one or more employees to register time against these tasks. Based on the time registered, customers can then be invoiced in one run.

PARTNER LOGIC



B1 PARTNER LOGIC (B1PL) - Your Logic - Our Quality

B1 Partner Logic enables our partners to submit their own logic to be integrated into the Boyum Pack offering. We will quality assure the stability of your logic within the Boyum Pack environment and provide all upgrades and maintenance.

As a result, your customer's requirements will be addressed while maintaining the Boyum seal of quality, and it will be housed within one SAP Certified add-on.

To be part of the program, contact Mikael Boyum (mb@boyum-it.com)

B1 Usability Package - Enterprise

Recommended enduser-prices from January 1st 2010:

1-20 users	€ 2.500,-	US\$ 3.700,-
21-30 users	€ 3.000,-	US\$ 4.440,-
31-40 users	€ 3.500,-	US\$ 5.180,-
41-50 users	€ 4.000,-	US\$ 5.920,-
+ 10 users	€ 500,-	US\$ 740,-

Productivity Package

Pay for what you need!

Print & Delivery

1-5 users	€ 1.000,-	US\$ 1.500,-
Extra 5 users	€ 500,-	US\$ 740,-

To come later this year:

- B1 Budget
- B1 Time Task

Annual software maintenance is 10% of the recommended retail price, charged annually in advance to the partner.

Partner Margin	Step 1	Step 2	Step 3
Sold license(s)	1-10	11-20	21-
Discount	30%	35%	40%

Margin levels (plans for subsequent year will be agreed at the start of each year)

boyumit

ABOUT BOYUM IT A/S:

Boyum IT was established in 1997 and is today one of Scandinavia's leading SAP Business One development and consultant houses. Since the beginning our philosophy has been to offer professional users a great and safe IT solution with high reliability and security. Boyum IT has been a SAP Partner since 2004, and the company is today a certified Gold Partner, as one of the few in Scandinavia. Boyum IT has subsidiary companies in Norway, Germany and USA and has a sales office in London.

*SAP Business One Global Solution Partner of the year 2008
SAP Business One Global Solution Partner - Sales Excellence 2009
Advantage Solution Designation 2010*

THE BOYUM PACK TEAM:

Mikael Boyum, CEO
Niels Hermansen, COO
Rasmus Wulff Jensen, CTO
Søren Boyum, Channel Manager (global)
Mads Madsen, Channel Enabler (global)
Dan McLachlan, Channel Manager (UK, ES, RU)
Ralf Hettler, Channel Manager (DE, AT, CH)

mb@boyum-it.com
nh@boyum-it.com
rwj@boyum-it.com
sb@boyum-it.com
mhm@boyum-it.com
dan@boyum-it.com
ralf.hettler@boyum-it.com

